



## Child Care Fee Subsidy Information Sheet

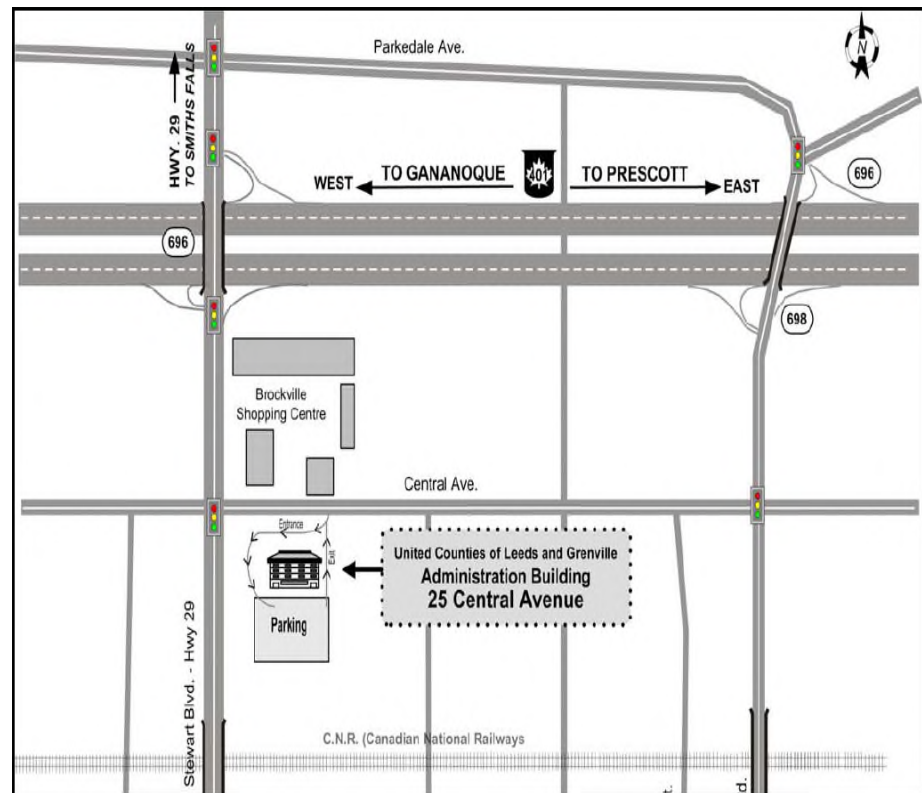
### How to Find Us

#### From Highway 401:

Take Stewart Blvd. (South) to Central Avenue and turn left (East). The building is immediately on the right, directly across the street from the beer store.

#### From Highway 2 or King St.:

Take Wall St. to Pearl St. and turn left on Pearl St. Turn right onto William St. (which turns into Stewart Blvd). Follow Stewart Blvd. North, until you reach Central Ave. and turn right. The building is on the right, directly across the street from the beer store.



Please provide the following documents at your appointment:

- **Current Child Care Tax Benefit Notice** (To obtain a copy call 1-800-387-1193)  
or **Current Federal Notice of Assessment** (To obtain a copy call 1-800-959-8281)
- **Court Orders/Separation Agreement - if applicable**
- **A letter from employer verifying hours/days of work (specify start/end times)**

If you have any questions, please do not hesitate to call extension 2392 or 2361 at the numbers below or 613-342-3840, (toll free 1-800-267-8146).